

ROYAL HILLS

LUXURY OF LIVING

BY
ENG. HASSIB IBRAHIM

For info:

Beirut-Lebanon
Corniche Jnah,
Al-Matnashi street,
Ibrahim Center
Block (A), 1st fl.

Mobile: +961 3 120456
+961 3 120456
Tel: +961 1 120456
Fax: +961 1 120456

P.O.Box: 14-6800

www.hassibibrahim.com
info@hassibibrahim.com

ROYAL HILLS

LUXURY OF LIVING





OVERVIEW

Located in the heart of the Capital of Beirut, and surrounded by the most beautiful urban arrangement, with the extraordinary panoramic view over looking the downtown and the mediterranean.

GENERAL SPECS

- . Luxurious main entrance.
- . Five levels for parking spaces and storage rooms.
- . Six elevators.
- . Spacious green areas.
- . Anti-seismic structure.
- . Internal satellite installations.
- . Electrical generator.
- . Video phone in each apartment.
- . First choice natural marble flooring.
- . High quality wooden doors and kitchen cabinets.
- . Fire escape stairs.
- . Double glazed aluminium doors and windows.
- . Electrical motorized aluminium rolling shutters.

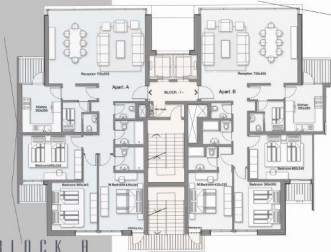




GROUND PLAN

ROYAL HILLS is a three blocks project, each block consists of 17 floors and a Ground floor with a beautiful landscape. Five Basement floor for parking and storage





BLOCK A
TYPICAL PLAN

- . Spacious entrance with a guest's toilet.
- . Salon and dining area.
- . Master Bedroom with a private luxurious bathroom.
- . Two bedrooms with a common bathroom and balcony.
- . Kitchen open to a balcony.
- . Maid's room and bathroom.



MAIN ELEVATION



APPT. A

- . Spacious entrance with a guest's toilet.
- . Salon and dining area.
- . Master Bedroom with a private bathroom.
- . One bedroom with a common bathroom and balcony.
- . Kitchen open to a balcony.
- . Maid's room and bathroom.

APPT. B

- . Spacious entrance with a guest's toilet.
- . Salon and dining area.
- . Master Bedroom with a private bathroom.
- . Two bedrooms with a common bathroom and balcony.
- . Kitchen open to a balcony.
- . Maid's room and bathroom.



GENERAL VIEW



- . Spacious entrance with a guest's toilet.
- . Salon and dining area.
- . Master Bedroom with a bathroom.
- . Two bedrooms with a common bathroom and balcony.
- . Kitchen open to a balcony.
- . Maid's room and bathroom.

BLOCK C
TYPICAL PLAN



ROOFTOP GARDEN